

Cutting Topography on the Laser Cutter

A Primer

This tutorial assumes the following:

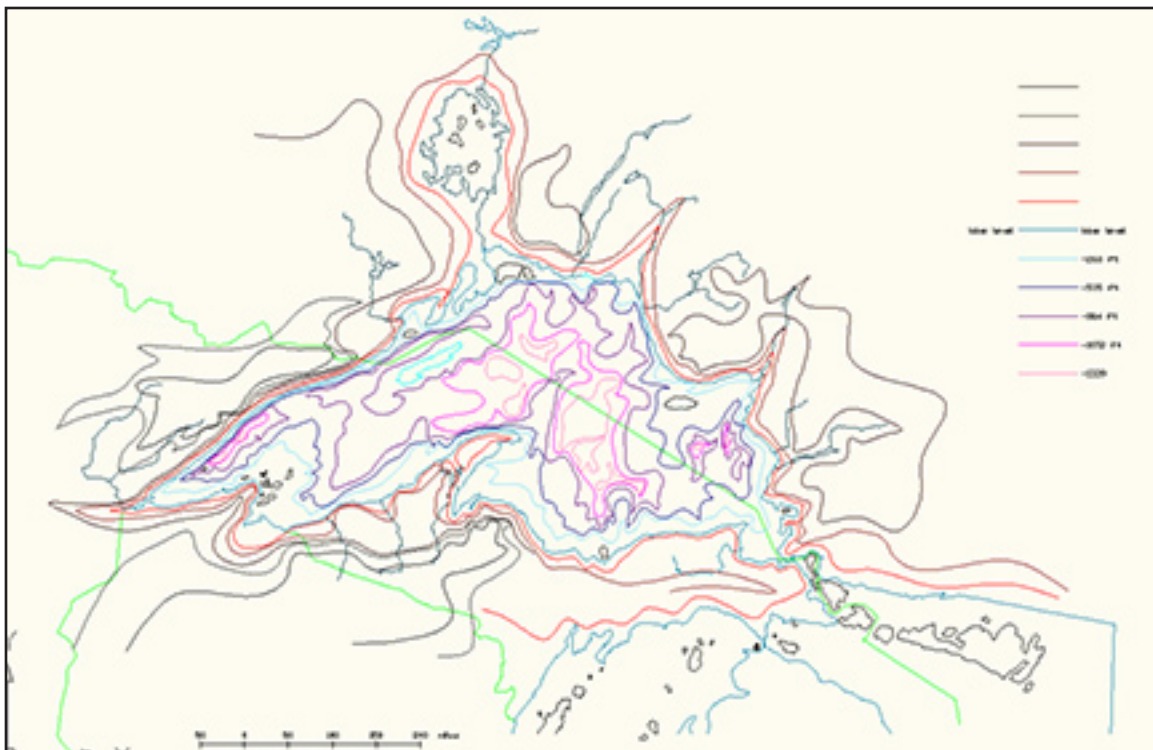
You have a basic working knowledge of AutoCAD.

The material size is the same as the laser cutting bed.

The finished size of the topo is the same size as the laser cutting bed.

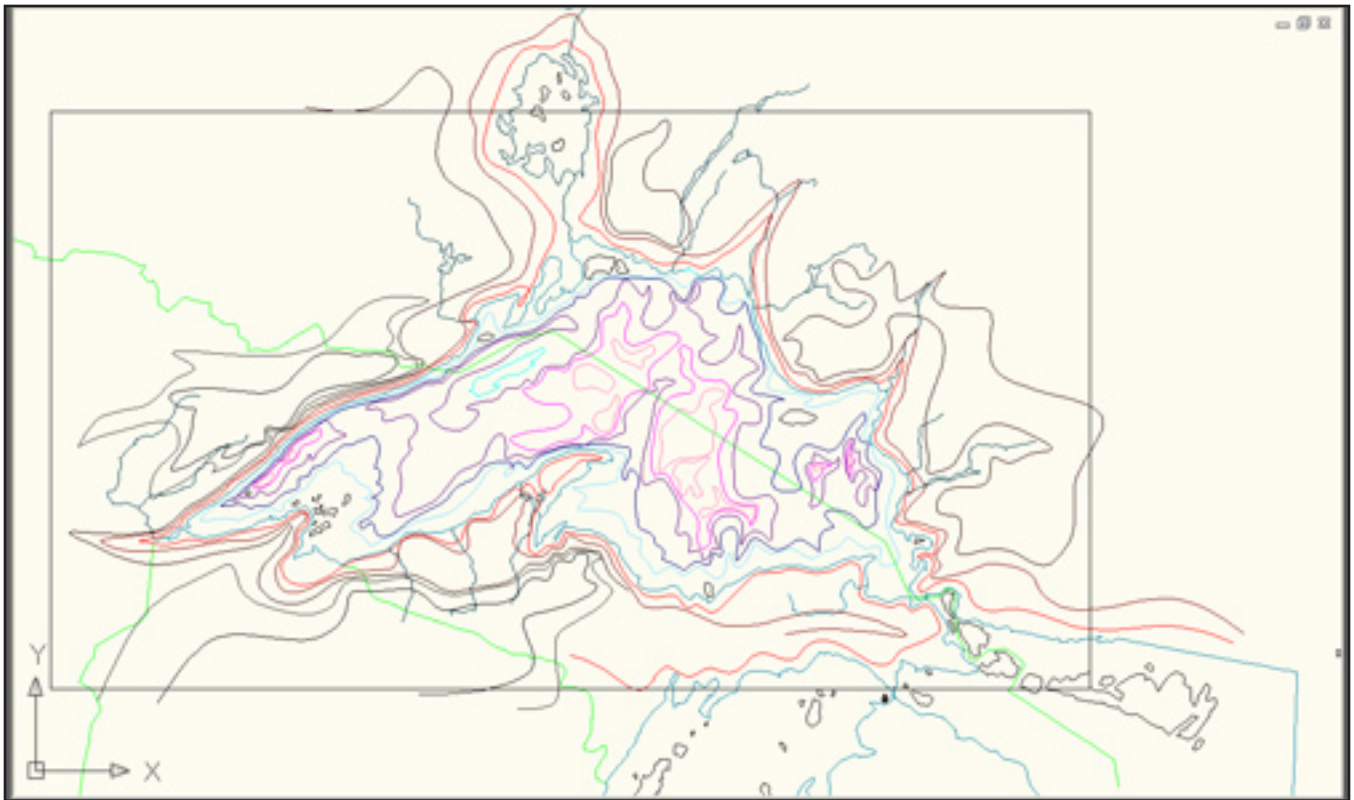
There are two basic ways to cut topography with the laser cutter. In this short tutorial we'll show you how to set your files up to easily cut topography. The first way we'll show you is by copying each topo line into a box of predetermined size. The second way is to set each topo line as a separate layer.

The Copying Method:



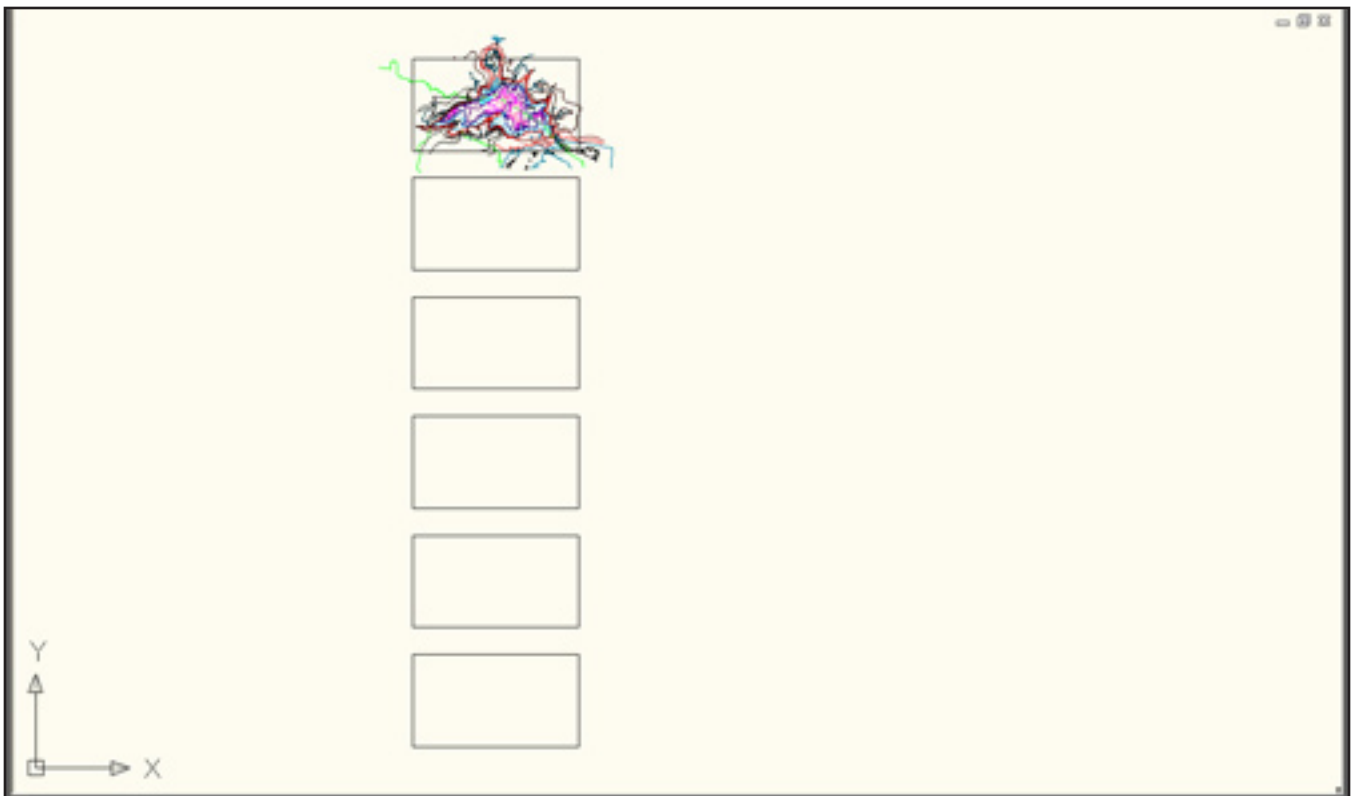
Step One:

Import your drawing into AutoCAD. It may be easiest to scale the drawing to print at 1:1 now.



Step Two:

Draw a 18"x 32" box around the contours you want to cut.



Step Three:

Create an array of boxes. There should be one box for every contour you want to cut.



Step Four:

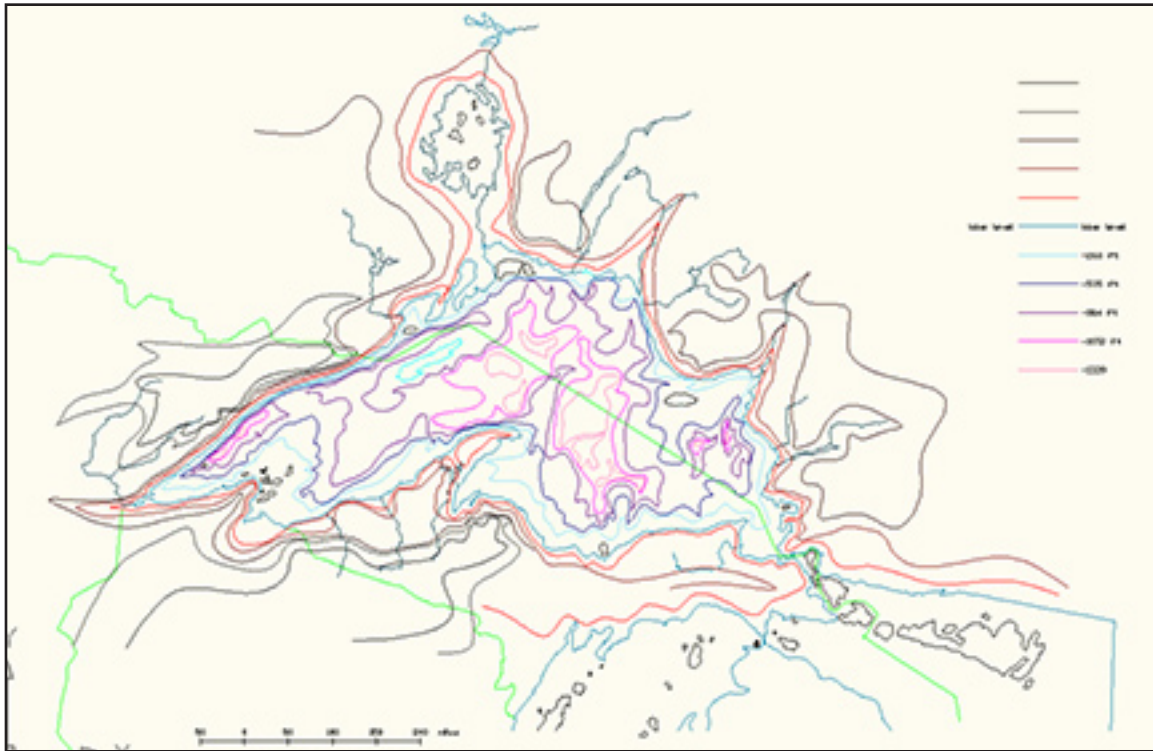
Move each individual contour line into its own box. Make sure you locate off of the same origin point when moving the contour lines.



Step Five:

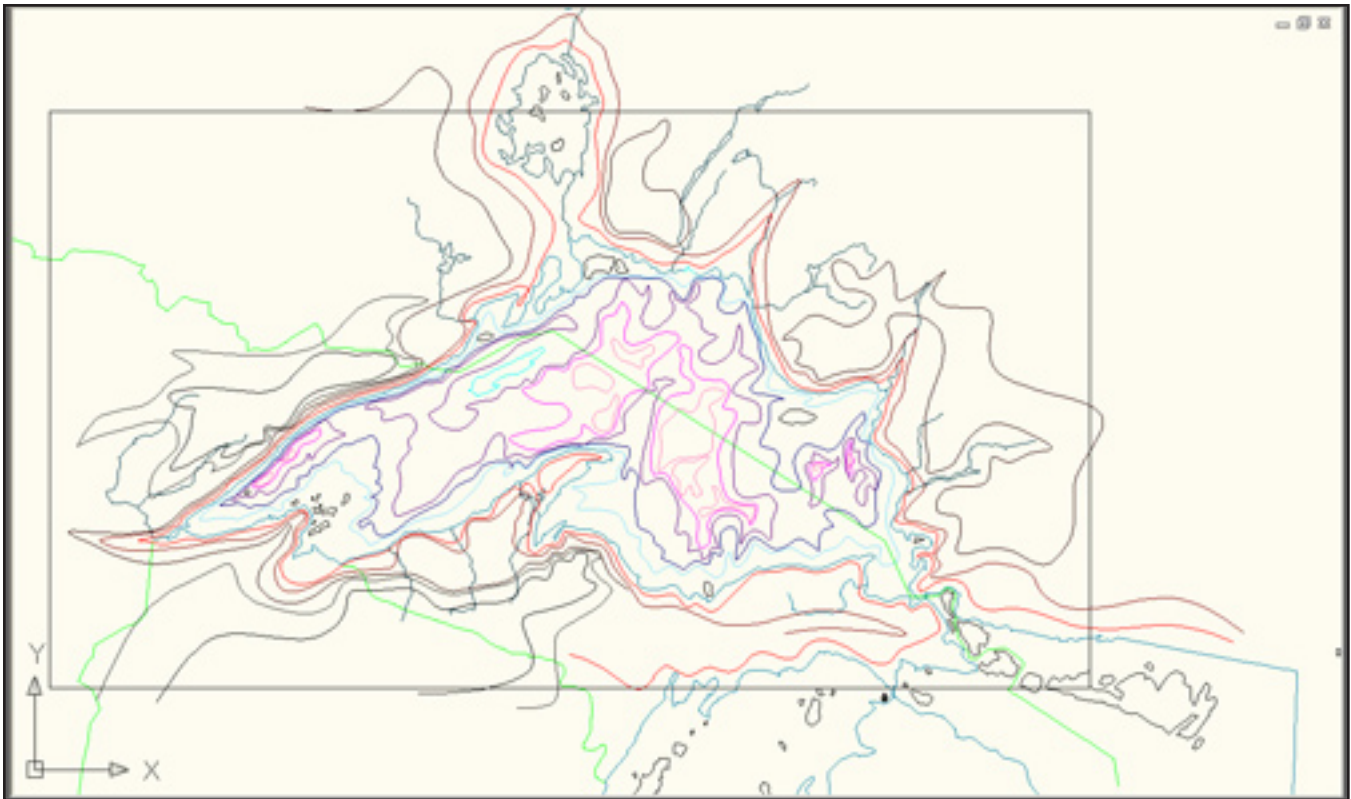
Change all of the contour lines you want to cut to blue with 0.000" lineweight. Laser Cut.

The Layers Method:



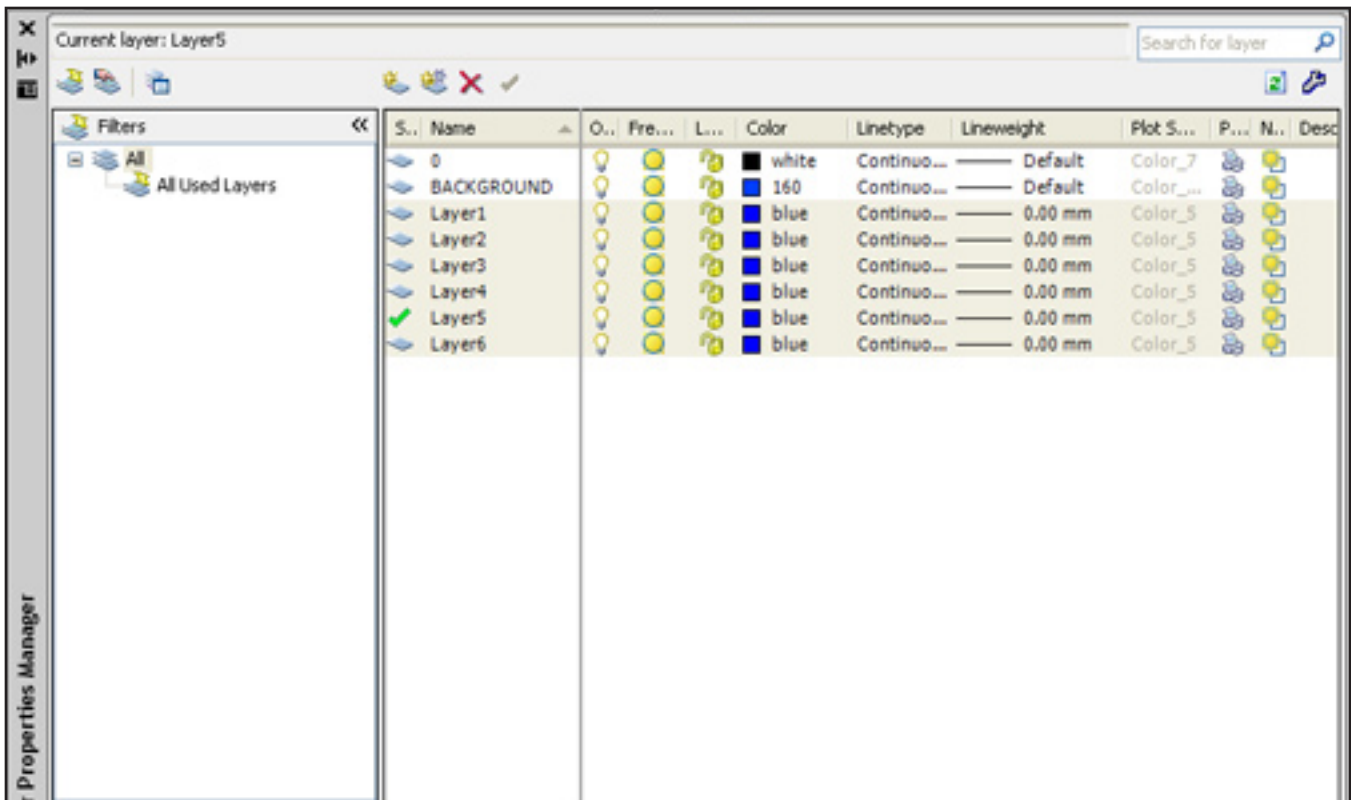
Step One:

Import your drawing into AutoCAD. It may be easiest to scale the drawing to print at 1:1 now.



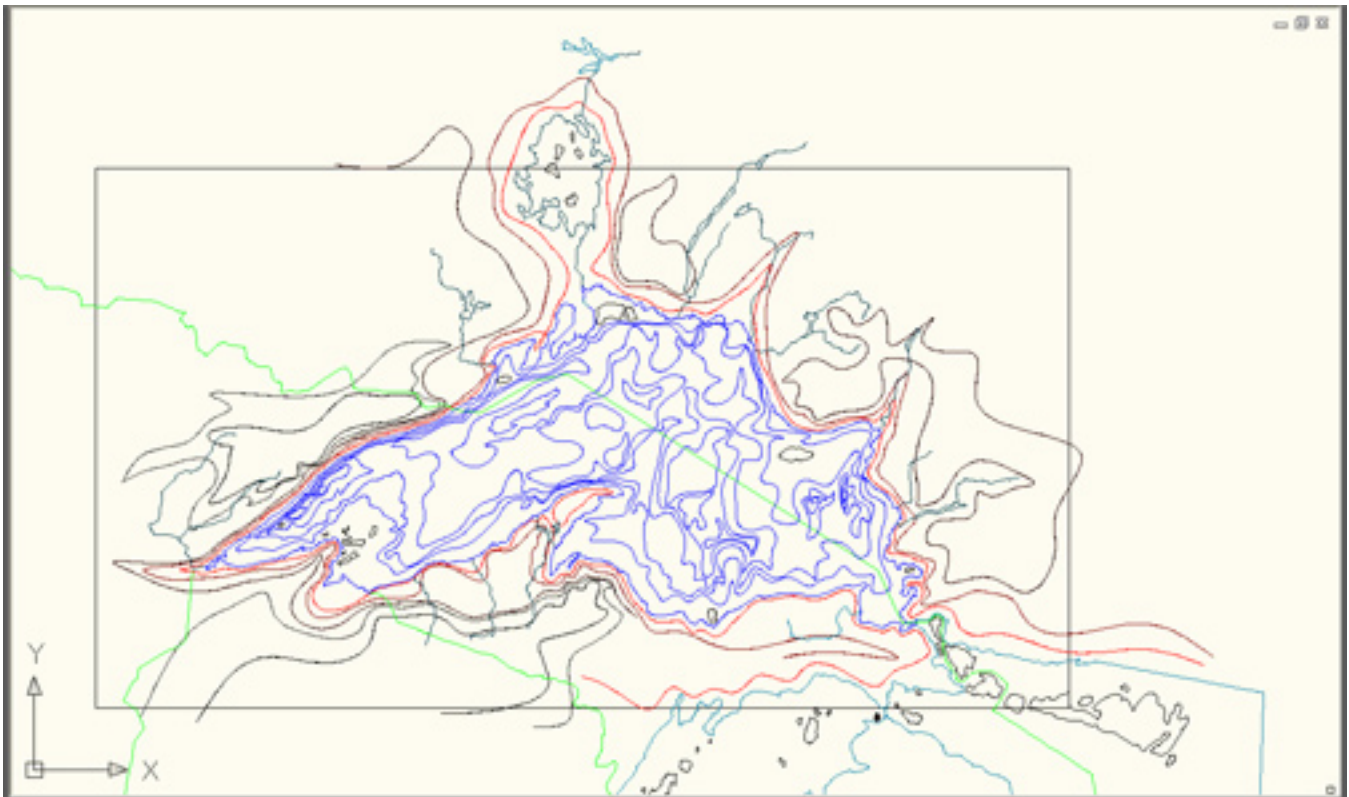
Step Two:

Draw a 18"x 32" box around the contours you want to cut.



Step Three:

Add the number of layers to your drawing necessary. Each topo line should have its own layer and the background should be on the 0 layer. Give each layer a lineweight of 0.000" and a line color of blue.



Step Four:

Place each single topo line on sequential layers. Turn all layers off except the one you want to cut. Repeat.